



**YANMAR**  
**EXCAVATOR**  
**SV100**

**SV100**

YANMAR Ultra - Tight  
Turning Excavator

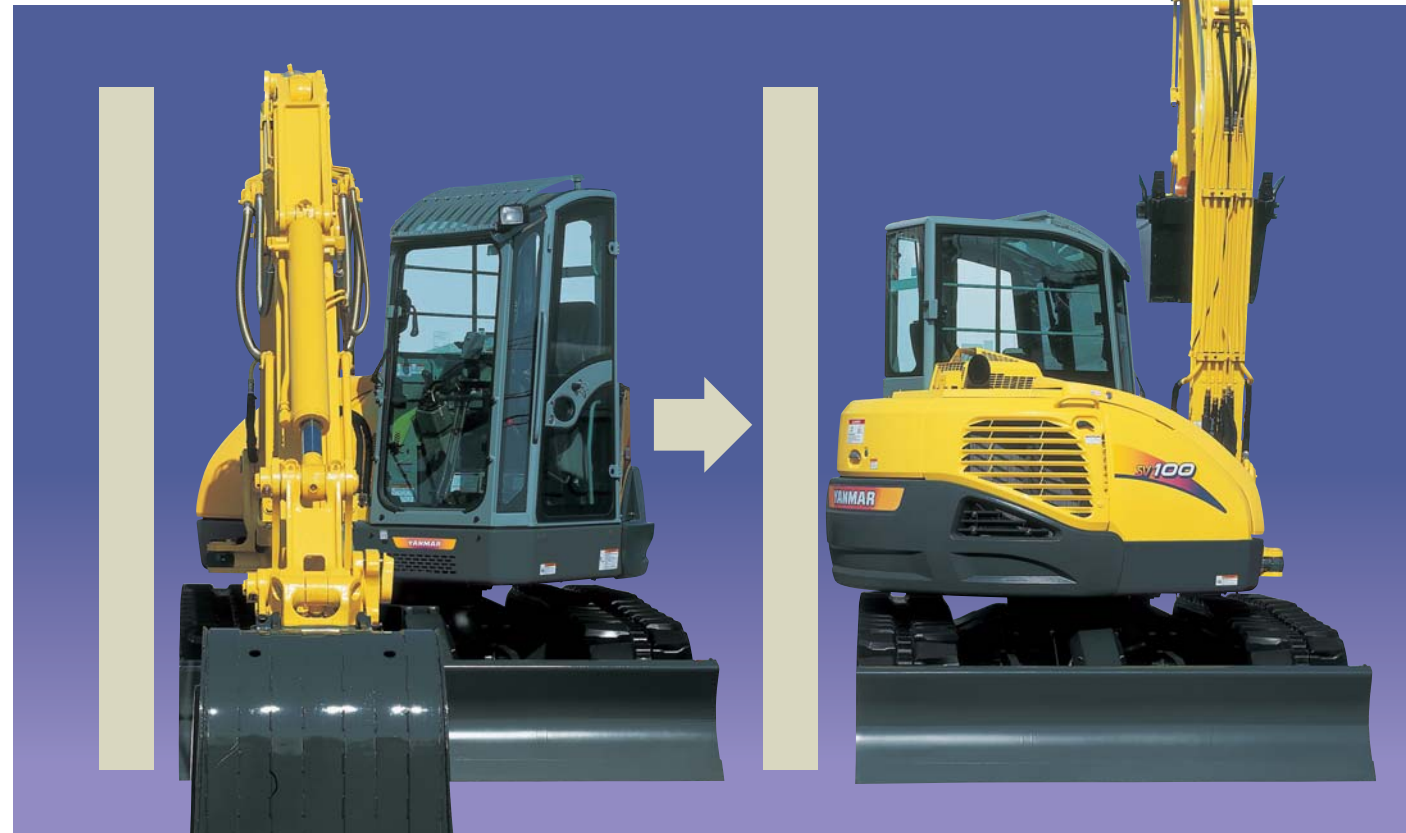


**SV100**  
Output: 73.5 hp (54.8 kW)  
Operating weight:  
20950 lbs (9500 kg)  
(\*Steel tracks)

**YANMAR - YOUR BEST PARTNER FOR BUILDING THE FUTURE**

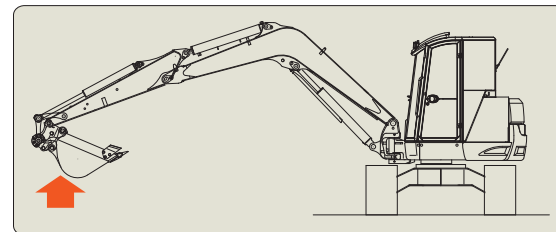
## Ultra-Tight Turning

The SV100 has been developed to satisfy the needs of ultra-tight turning. The turning radius in both front and rear is so small that the boom bracket stays entirely within the tracks. This smooth tight turning radius adds versatility on tight work sites!



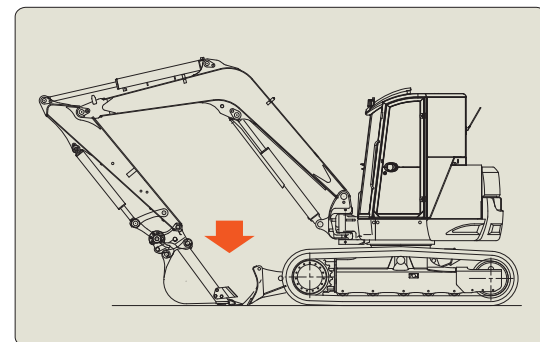
### The SV100 has the Stability of a Conventional style Unit

The wide spacing of the distinctive Yanmar offset tracks achieves a good grip on the ground and the high tensile strength steel plates keep the implement light. The outstanding balance is further enhanced by the newly developed large counterweight. The resulting stability is as great as that of a conventional style unit.



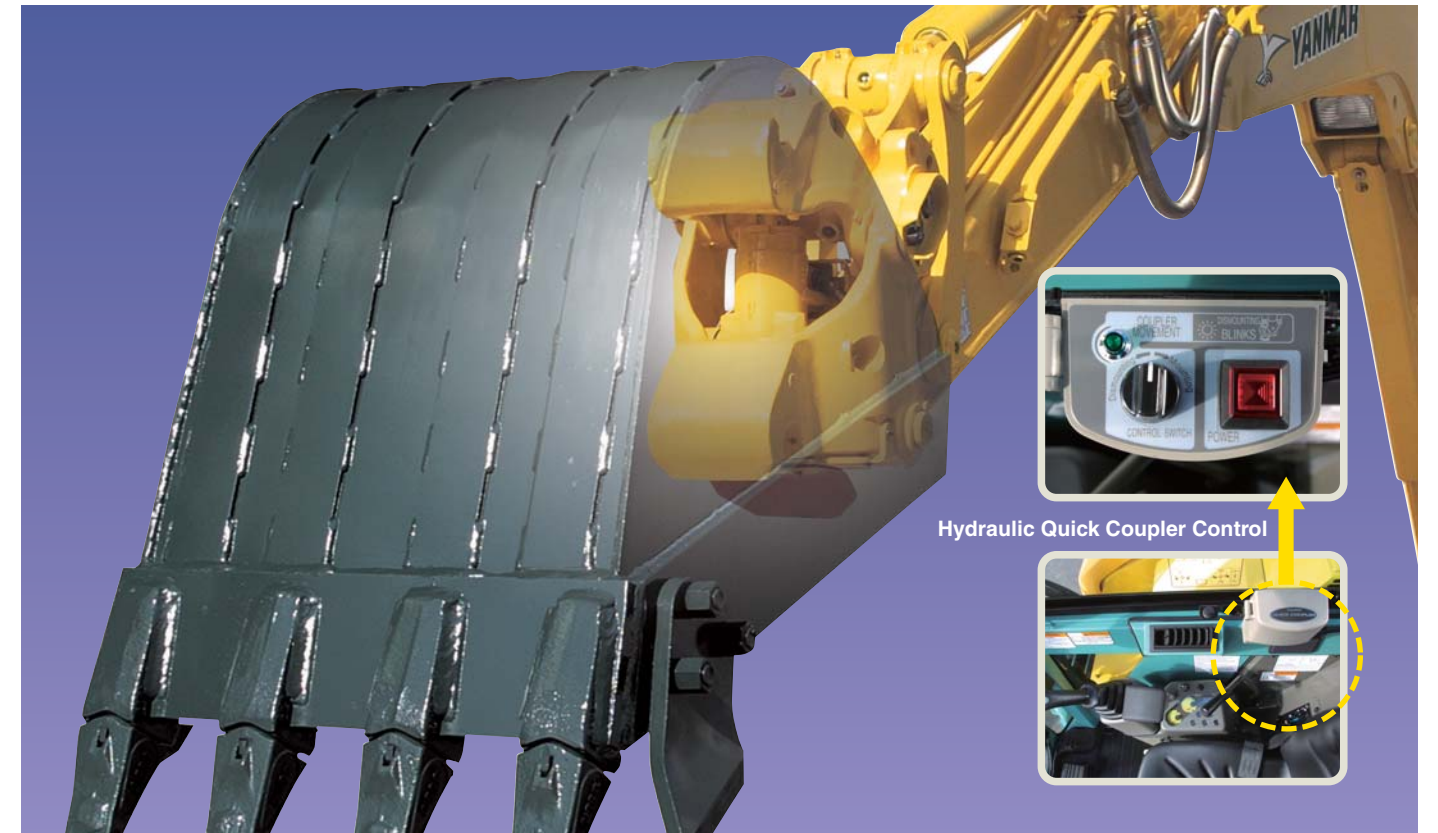
### Convenient Bucket-Blade Operation

The blade makes be able to hold objects with the bucket, therefore it is very convenient to scoop objects by bucket without spill-over.



## The First Tailor-Made Hydraulic Quick-Coupler in the Industry -- It's a Standard Equipment and Making Switch of Buckets easy!

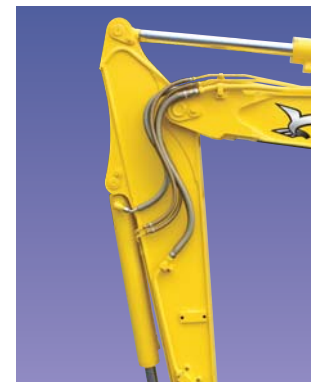
The arm was designed from the start to accommodate our new hydraulic quick-coupler, so that job performance will be significantly enhanced. The use of a conventional coupler is relatively time-consuming, and results in reduced productivity. With the Yanmar hydraulic quick-coupler, attachment changes are faster and easier.



Hydraulic Quick Coupler Control

### One Person Operation

Attachment changes are made easily from the operator's area. The locking pins assure safe operation. Virtually most brands of pin-on attachments can still be used. This eliminates the need to replace existing attachments.



To enable the use of additional hydraulic attachments, PTO is piped to the end of the arm.



The ease of overhead windshield storage helps reduce windshield damage.



2-way pattern control lever, fingertip change. (ISO or OPTION).

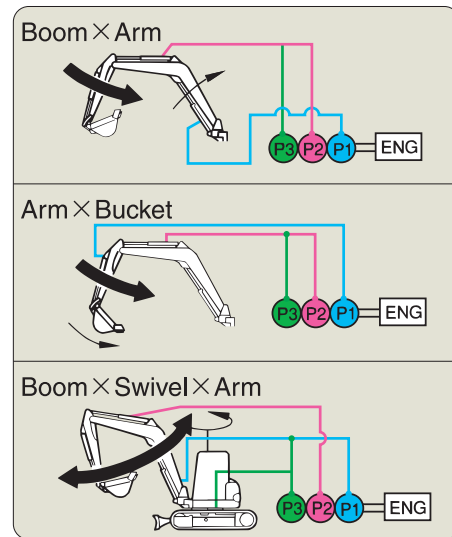
## VICTAS (ViO Crawler Technology by Advanced Stability)

VICTAS provides an expanded track gauge for more stability without increasing undercarriage width. The center of gravity is lowered without widening the "footprint" of the unit. The short-pitch rubber crawler permits more comfortable traveling.



**VIPPS (ViO Progressive 3-Pump System) increases power and speed, and fuel economy.**

**Allows simultaneous multi-function operation to increase on the job productivity.**



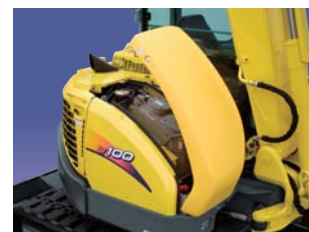
Cabin light for a bigger range of vision.



Integrated boom-light is protected from damage.



Large opening rear hood for easier maintenance.



Battery, fuel and hydraulic can be checked more conveniently.



Removable side frame cover for easier service accessibility.



Angled crawler frame reduces unwanted build up of foreign matter. Increases roller life.

## Large Comfortable Operating Space

The SV100 offers lots of room for maximum comfort and productivity.

Air conditioner is standard equipped.

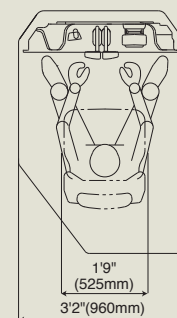


### Large Operating Space

**Space of the Cabin**

14.0 sq.ft. (1.3m<sup>2</sup>)

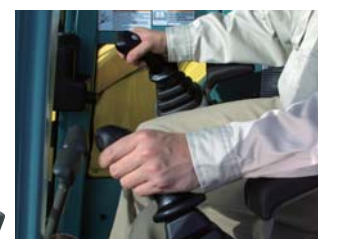
**SV100**



Wider entrance to the work station.

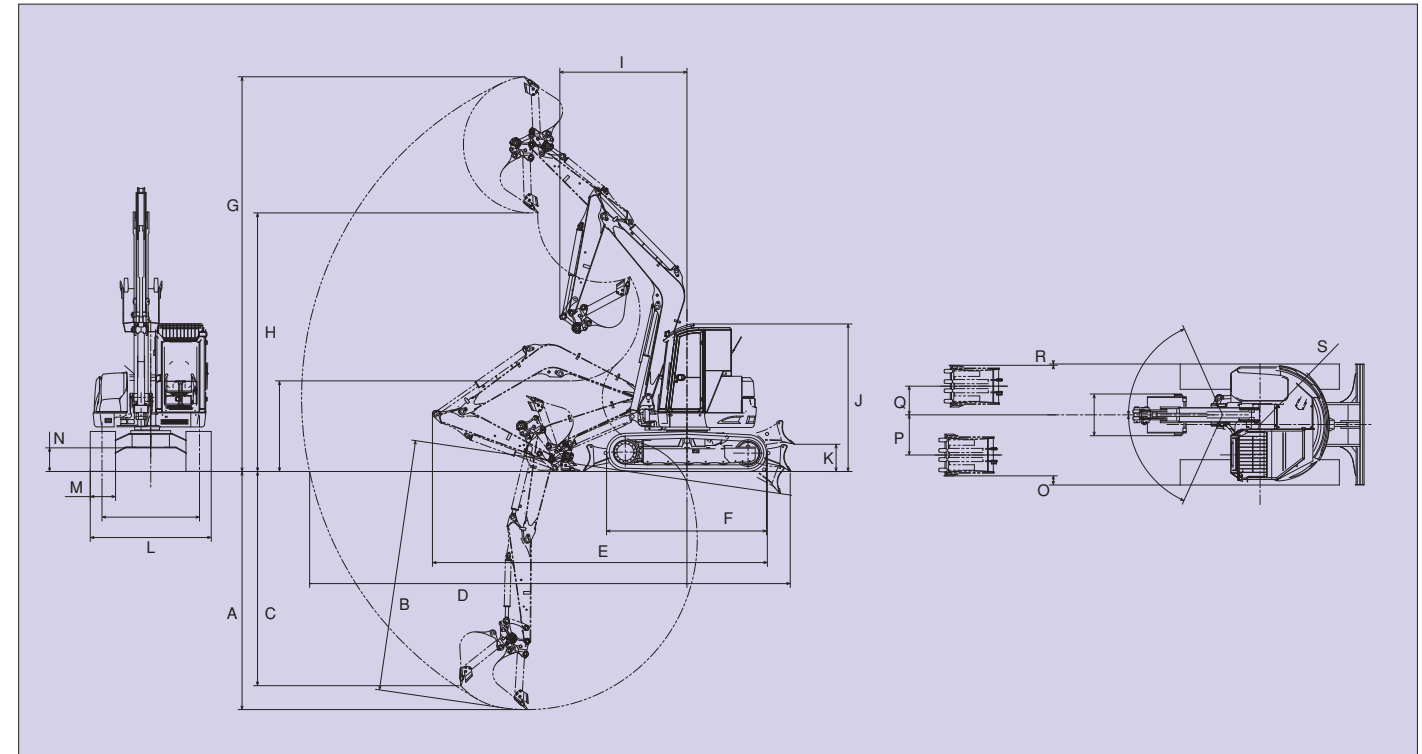


Reclining and suspension seat with seat belt.



Joystick controls and arm rests are convenient to use and reduce operator fatigue.

*TOPS / FOPS cabin with seat belt protects against operator injury.*



**Dimensions**

Unit: ft-in (mm)

	A	B	C	D	E	F	G	H	I	J
SV100	15'3"(4650)	16'1"(4900)	13'9"(4200)	23'9"(7240)	21'1"(6430)	10'1"(3070)	24'10"(7570)	16'3"(4960)	8'(2440)	9'3"(2830)
	K	L	M	N	O	P	Q	R	S	
SV100	1'8"(520)	7'7"(2320)	1'7"(485)	1'6"(450)	7"(175)	2'6"(770)	1'10"(550)	1"(25)	4'4"(1330)	

**Specifications**

Model	SV100		
Type	Cabin		
Operating weight	Rubber track	lbs (kg)	20730 (9400)
	Steel track	lbs (kg)	20950 (9500)
Engine	Type	Water-cooled 4 cyl., diesel	
	Model	4TNV98T-SBV	
	Output	hp (kW)/RPM	73.5(54.8) / 2200
Performance	Max. digging force, bucket/arm	lbs (kN)	12216/9658 (54.3 / 43.0)
	Traveling speed	MPH (km/h)	2.9 / 1.6 (4.7 / 2.6)
	Swing speed	RPM	9.6
	Boom swing angle, (L/R)	degrees	68 / 68
	Ground contact pressure	Rubber track	PSI (kPa)
Steel track		PSI (kPa)	5.44 (37.5)
Hydraulic system	Pump capacity	GPM (L/min)	21.5 x 2 + 16.3 + 3.8 (81.4 x 2 + 61.6 + 14.3)
	Main relief set pressure	PSI (MPa)	3988 (27.5)
Undercarriage	Track	Rubber or steel	
Blade dimensions	Width x height	ft-in (mm)	7'7"x1'8" (2320x520)
Fuel tank capacity		Gals (L)	31.7 (120)

**Clean and Silent**



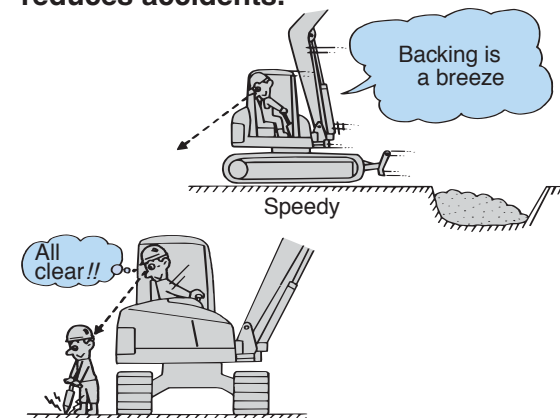
**An Environmental Engine Inside**

Clean exhaust and powerful output. The people-friendly Yanmar C&S (Clean and Silent) engines are approved under the emissions and the noise regulations of the EU (Europe) and the EPA (United States).

**Efficient Engine Powers**

The hydraulic system for lower operating expenses.

Good visibility reduces accidents.



**Hydraulic P.T.O.**

Model	Output	SV100	
		PSI(kPa)	GPM (L/min)
Specifications			2200 RPM 1250 RPM
Combined flow, double actions		3555 (24518)	37.8 (143) 21.5 (81.3)

## LIFTING CAPACITY

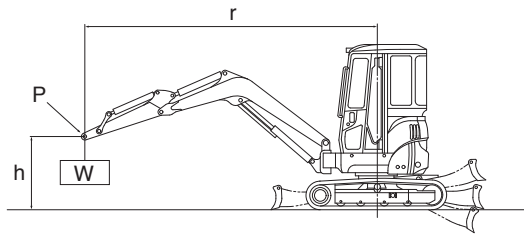
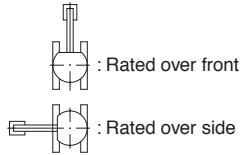
Excavator equipped with TOPS/FOPS cabin and rubber crawlers.

r: Reach from swing center line : ft-in(mm)

h: Lift point height : ft-in(mm)

w: Lifting capacity : lbs(kg)

P: Load point



- The rated lifting capacities that are indicated below are based on ISO 10567 and do not exceed 87% of the excavator's hydraulic lifting capacity or 75% of its static tilt load (tipping load) capacity.
- The following operating criteria are also applicable to the calculation of these maximum loads;
  - The "load point" is the location of the front bolt on the arm.
  - The three indicated machine positions are :
    - arm over the front end (blade down),
    - arm over the front end (blade up), and
    - arm over the side (blade up).
  - The operating cylinder is the boom cylinder.
- The weight of the excavator's bucket, hook, sling and other lifting accessories have been taken into consideration when calculating these maximum loads.

### SV100

LIFT POINT HEIGHT h:ft-in (mm)	r: REACH ft-in (mm)				r: REACH ft-in (mm)				r: REACH ft-in (mm)			
	RATED LIFT CAPACITY OVER FRONT BLADE DOWN lbs (kg)				RATED LIFT CAPACITY OVER FRONT BLADE UP lbs (kg)				RATED LIFT CAPACITY OVER SIDE BLADE UP lbs (kg)			
	MAX	16'5" (5000)	13'1" (4000)	9'10" (3000)	MAX	16'5" (5000)	13'1" (4000)	9'10" (3000)	MAX	16'5" (5000)	13'1" (4000)	9'10" (3000)
16'5"(5000)	*3881(1760)				*3881(1760)				*3881(1760)			
13'1"(4000)	*3726(1690)	*3682(1670)	*3749(1700)		*3726(1690)	*3682(1670)	*3749(1700)		2844(1290)	*3682(1670)	*3749(1700)	
9'10"(3000)	*3793(1720)	*3991(1810)	*4388(1990)		2911(1320)	3396(1540)	*4388(1990)		2403(1090)	3109(1410)	*4388(1990)	
6'7"(2000)	*3837(1740)	*4432(2010)	*5424(2460)	*7673(3480)	2624(1190)	3749(1700)	*5424(2460)	*7673(3480)	2205(1000)	3065(1390)	4410(2000)	*7673(3480)
3'3"(1000)	*3837(1740)	*4939(2240)	*6593(2990)	*9327(4230)	2558(1160)	3572(1620)	5248(2380)	7784(3530)	2095( 950)	2977(1350)	4256(1930)	6196(2810)
Ground(0)	*3903(1770)	*4939(2240)	*6681(3030)	*9415(4270)	2602(1180)	3374(1530)	4763(2160)	7431(3370)	2205(1000)	2800(1270)	3903(1770)	5909(2680)
-3'3"(-1000)	*3749(1700)	*4608(2090)	*6395(2900)	*8842(4010)	2867(1300)	3330(1510)	4763(2160)	7563(3430)	2293(1040)	2690(1220)	3903(1770)	5865(2660)
-6'7"(-2000)	*3749(1700)		*5446(2470)	*7122(3230)	*3749(1700)		4697(2130)	6306(2860)	2911(1320)		3837(1740)	5865(2660)

Note : The maximum loads marked with an asterisk (\*) were limited by the Excavator's hydraulic lifting capacity rather than by its static tilt load (tipping load) capacity.

## STANDARD EQUIPMENT

- Blade
- Boom swing function
- Rubber or Steel tracks
- Hydraulic quick coupler
- Auxiliary valve and piping (arm end)
- 2way control pattern change
- Cylinder cover (boom, blade)
- Windshield washer
- TOPS/FOPS Cabin
- Defroster
- Airconditioner
- Joystick pilot controls
- Arm rests
- Suspension and reclining seat

- Seat belt
- Traveling levers and pedals
- Traveling alarm
- Built-in type boom light
- Exterior cabin work light
- Operation manual

(Please note that the standard equipment may vary from this list. Consult your Yanmar dealer for confirmation.)

Note : All information presented in this Brochure is subject to change without notice.

## YANMAR AMERICA CORP.

CONSTRUCTION EQUIPMENT DEPT.  
101 International Parkway, Adairsville, GA 30103, U.S.A.  
TEL:770-877-7570 FAX:770-877-7572  
<http://www.yanmar.com>